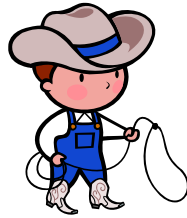


## Content

Characters – Note both individuals and groups and ways they are described.



Relationships – Note interaction, including dialog.



Place & Setting – Look up each on a map; note distance between locations.



Actions & Events – Note imperatives and shift in tenses; identify primary and secondary activity.

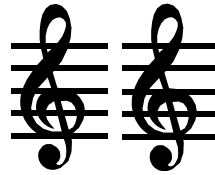
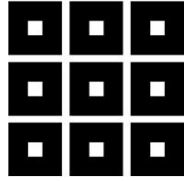


Time References – Note length of time passed between action and events.

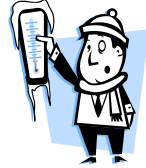


## Connections

Repetition – Reiteration of the same terms or ideas.



Contrast – Association of opposites.



Continuity – Association of similar things that vary in some way.



Cause to Effect – Consequences of an action, event, or decision.



General to Specific – Movement from a general idea or activity to particulars about that idea.



Climax – Arrangement of material in a progression from least to greatest



**Reason** – An explanation marked by words such as “for,” “because,” “since,” “as,” and “whereas”

**Inference** – A conclusion based on an event or statement; often indicated by use of “therefore,” “wherefore,” “consequently,” or “accordingly”

**Condition** – A statement that is only true when something else is true or happens; indicated by “if,” “if...then,” or “provided that”